

PATH TO PURPOSE

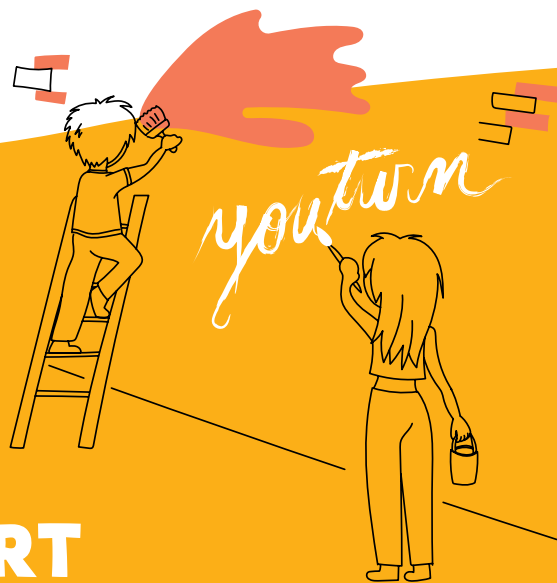
ANNUAL REPORT

2021-2022



View the report online for
the full interactive experience
and additional content

YOU↑TURN®



ABOUT THIS REPORT

Youturn Limited is a not-for-profit charity established in 1989 and today makes a difference across the sectors of Child Safety, Homelessness, Mental Health and Suicide Prevention.

This Annual Report provides our community and partners with a transparent overview of our activities during the 2021 – 2022 financial year, including our goals, key achievements, our financial performance and future focus.

The theme for this report is “Path to Purpose”. This last year we have cemented our Youturn brand and clearly mapped out a path and purpose to improving the health, wellbeing and productivity of vulnerable people. We continue to build momentum



A quick look
at our year

and have found a like-minded community with partners and supporters joining us on the journey, as we work towards achieving our goals set out in our Strategic Plan.

We acknowledge the traditional Custodians of the lands on which we operate and pay our respects to their elders, past, present and emerging.

Our organisation is a place where human rights are respected and people of diverse genders and sexual orientations are welcome and supported.

If you would like to follow our journey, subscribe to our newsletter and follow us on our social media channels.



CONTENTS



WELCOME	4
WHAT WE DO	6
WHO WE ARE	7
OUR JOURNEY	8
OUR BOARD	10
EXECUTIVE TEAM	11
OUR WORKFORCE	12
WORK LOCATIONS	13
OUR IMPACT	14
CHILD SAFETY	15
HOMELESSNESS	16
MENTAL HEALTH	17
SUICIDE PREVENTION	18
OUR STRATEGIC PATHWAY	19
5 PILLARS OF OUR STRATEGIC PLAN	20
HOW HAVE WE TRACKED?	22
WHO HELPS US	23
PARTNERSHIPS STORIES	24
MAPPING THE JOURNEY FORWARD	26
THANK YOU	27





WELCOME!

It is with great pleasure that we share with our community the Youturn Annual Report for 2021-2022. This marks the third year of operating within a remarkably challenging environment, one which has been forever changed by the impacts of COVID-19, workforce constraints, as well as flooding events throughout the year.

Despite the complexities, this report outlines the significant impact we have made as the community need, particularly for housing and mental health support, was greater than ever before. The dedicated Youturn team have worked tirelessly this past year to ensure that our services remained accessible and safe for the 9000+ individuals we supported.

Our front-line staff are the heart of our organisation and we thank them for their ongoing commitment and dedication to supporting the children, young people and families who turn to us for much needed Child Safety, Homelessness, Mental Health, and Suicide Prevention services.

The theme for this year's report, **Path to Purpose**, reflects the focused and targeted efforts undertaken during FY22, across our organisation, as we strive to make a difference in all we do. Our 2020-2025 Strategic Plan formed the strong foundation and guided our path this year as we committed to making intentional and meaningful decisions to increase not only our reach but also the impact we have as a charity.





This year we partnered with purpose to help fulfil our goal to provide innovative and community-led projects including our Tiny Houses, Fishin' Mates, Self-Defence and many others. These projects, as well as community events and activities raising awareness and advocacy for key social issues, were made possible through the support of a range of individuals, businesses and organisations (including local government) who share our passion for change.

This report is a true celebration of the key steps on our path to creating safe, inclusive and supportive communities. We share this journey and our success with our amazing talented team, including our dedicated Board, as well as all those in our community who reached out to offer their support.

We walk alongside many on our path to purpose and we are truly thankful for those who have journeyed with us this year, to ensure that vulnerable people continue to receive support when they need it most.

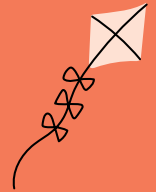


Watch Tanya's
welcome video
online



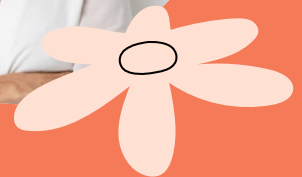
Dr. Tanya Bell
CEO

A stylized, handwritten signature of Tanya Bell in black ink.



Paula Holden
BOARD CHAIR

A stylized, handwritten signature of Paula Holden in black ink.





WHAT WE DO

Youturn ensures that we place vulnerable people, and those that support them at the centre of our service delivery.

OUR IMPACT

Across the areas of Child Safety, Homelessness, Mental Health and Suicide Prevention

WE SUPPORTED

9,963

YOUNG & VULNERABLE PEOPLE around Australia.*

*Total number of people we provided at least one service between 1 July 2021 and 30 June 2022.

CHILD SAFETY

Providing children and young people with safe and caring environments

HOMELESSNESS

Delivering affordable and sustainable housing for young people and families in our communities

MENTAL HEALTH

Providing clinical and non-clinical support services to young people to manage their mental health

SUICIDE PREVENTION

Supporting people and communities impacted by suicide





WHO WE ARE

MISSION, VISION & VALUES



It is in times of intense crisis or emotional distress, that most young and vulnerable people reach out to us, seeking our understanding and compassion. Our staff provide non-judgmental, individualised support to those in need, ensuring we are delivering on our Mission, Vision and Values.



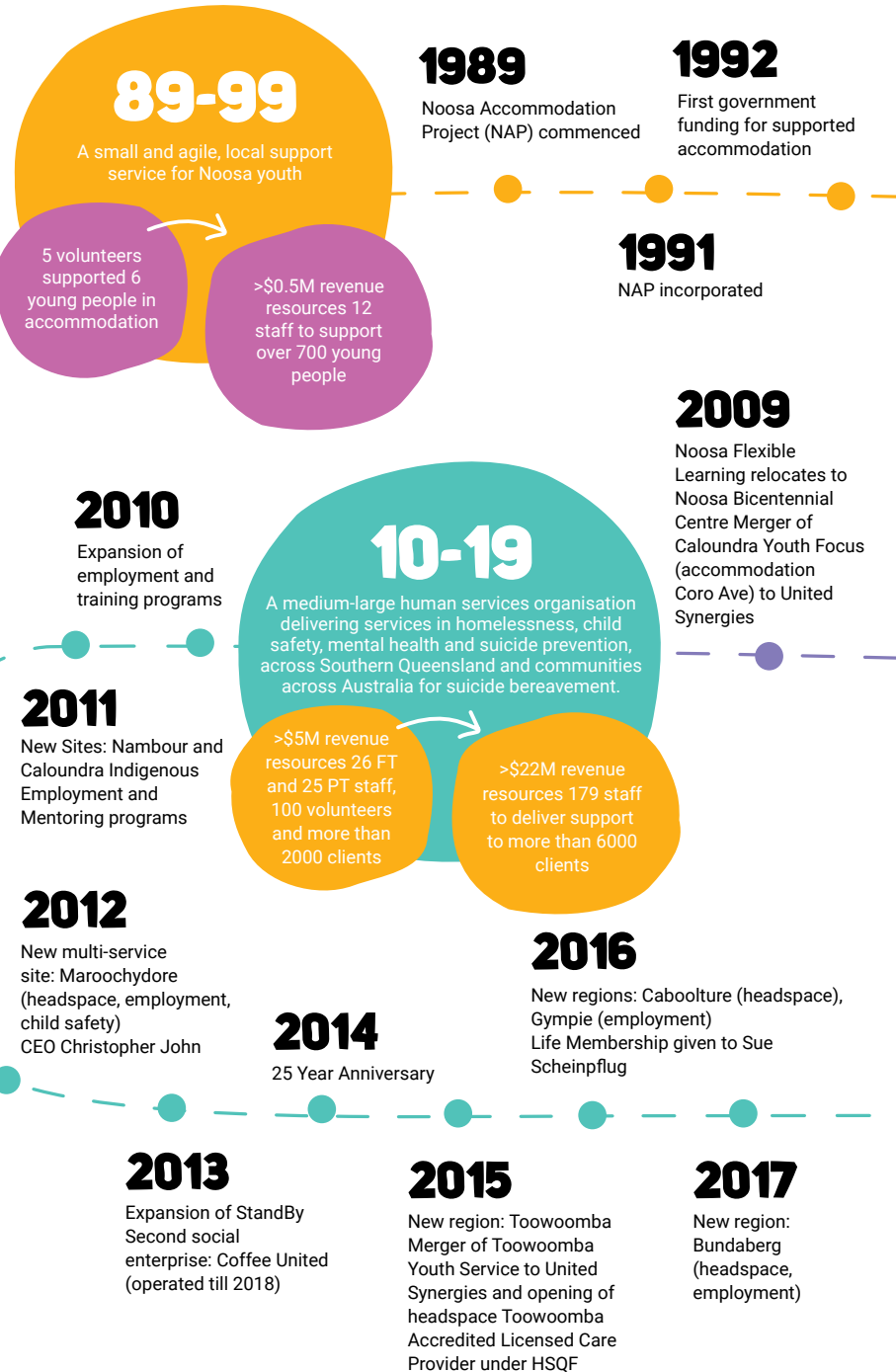
OUR JOURNEY

The story of our humble beginnings is a rich and interesting one. It celebrates community spirit and how an unassuming grass roots approach was the answer to a need in our local, coastal community on the Sunshine Coast.

Our origins date back to 1989 when assistance to six young people, who were experiencing homelessness, was provided by five volunteers who established the Noosa Accommodation Project (NAP). With dedicated and determined campaigners and the help of the local community, NAP evolved to provide supported accommodation to young people aged 16-21 years.

Over the years, our organisation has grown and continued to evolve to meet the needs of vulnerable people in our community. Our services expanded to other regions and branched and diversified into new focus areas including Child Safety, Homelessness, Mental Health and Suicide Prevention.

WE ARE VERY PROUD OF OUR HERITAGE AND THE SUPPORT WE HAVE PROVIDED TO OUR LOCAL COMMUNITIES.



1997

New Service: Youth Support Coordinator (YSC) in 4 Noosa Shire schools (ran till 2013)

1999

Job Placement Employment and Training (ran till 2009)

00-09

A human services organisation that values community partnerships, recognising that working together we can do more.

>\$1M revenue resources 17 staff and 6 programs to support over 800 young people

>\$4M revenue resources 28 FT and 23 PT staff, 100 volunteers and nearly 2000 clients

1993

New name to Noosa Youth Service. 3 staff

1998

First Social Enterprise at Eumundi Markets Youth Counselling by Psychologist (1 day per week, ran till 2008)

2006

Expansion of StandBy re-brand of TransEd to Noosa Flexible Learning Centre, a partnership between United Synergies, Edmund Rice Education and State Education Department (5 schools and 5 outreach, based at Ernest St)

2004

New building, same site (Tewantin) TransEd Flexi Learning with Noosa District SHS and Flame Flexi Mobile Learning

2002

Noosa Suicide Bereavement Project (grew into StandBy Support After Suicide, a national program 2019)

2000

Strong word of mouth (>50% self-referrals)

2008

Booin Gari - a celebration of Aboriginal and Torres Strait Island Culture established

2005

New name and legal status: United Synergies Ltd YSC program from 4 to 7 schools, CEO Sue Scheinpflug, Life Membership given to Mike St John

2003

Mentoring (ran till 2015, worked with more than 1000 young people)

2001

SAP (22 beds) introduced "Live-in Volunteers"

2018

New service: headspace Gympie satellite

2020 + BEYOND

A national organisation supporting vulnerable people focusing on Housing & Homelessness, Mental Health and Suicide Prevention

>\$22M revenue resources 166 staff supporting more than 8600 people

In 2022 >\$33M revenue resources 168 staff supporting more than 9,900 people

2020

Renamed to Youturn Limited Launch of "Big Hearts for Tiny Homes" campaign

2022

Expansion into community housing confirmed by the Board Investment into the building of duplexes in Toowoomba New full headspace site for Gympie

2019

United Synergies supports mainly young people under 18 years (65%) and 18-25 years (34%) StandBy Support After Suicide services 30% of Australian population, mainly over 25 years (79%) and 18-25 years (21%) CEO Andrew Anderson

2021

National expansion of StandBy achieved Building of Tiny Homes commences CEO Dr Tanya Bell

OUR BOARD

Youturn has a skills-based Board of Directors who provide guidance, knowledge and expertise to our CEO and the Executive Team.

Good governance at Youturn is achieved by ensuring daily operations contribute to the strategic direction. The Board ensures that regulatory and social responsibilities as a charity and company limited by guarantee are met.

This year three new Directors were recruited to the Board, including Scott Orpin, Georgia O’Keeffe and Aaron Minton who all bring a wealth of knowledge and experience from various sectors of industry.

We acknowledge and thank our Board for gifting their time and talent to Youturn.



Paula Holden
CHAIR



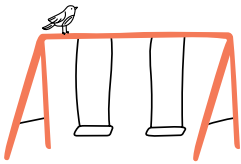
Katie Acheson
DIRECTOR



Mitch Evans
DIRECTOR



Dr Oscar Modesto
DIRECTOR



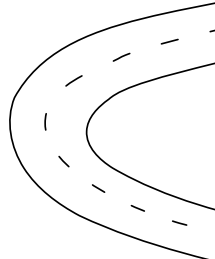
Scott Orpin
DIRECTOR



Georgia O’Keeffe
DIRECTOR



Aaron Minton
DIRECTOR



ACHIEVEMENTS AND BOARD ACTIVITIES THIS YEAR INCLUDE:

Leading a philanthropic culture which resulted in Youturn purchasing two Tiny Homes for people experiencing homelessness;

Commitment to self-fund the build of two duplexes in Toowoomba for people experiencing homelessness; and

Developing a culture of innovation which supported the team to partner in multiple projects including a mixed reality room research project for people struggling with their mental health.



Our Board



EXECUTIVE TEAM

Our Executive Team is led by our Chief Executive Officer (CEO), Dr Tanya Bell, who was appointed to the role in October 2021.

Youturn's team of executives bring a wealth of experience and extensive skills in each of their respective fields and are

also incredibly passionate about the services and support they oversee.

This year, Amanda Glenwright took on the newly created role of General Manager, Development and Impact and has brought with her extensive experience in health and social care.



Dr Tanya Bell
CHIEF EXECUTIVE OFFICER



Rob Owens
CHIEF FINANCIAL OFFICER



Darce Foley
GENERAL MANAGER
(Community Services)



Amanda Glenwright
GENERAL MANAGER
(Development & Impact)



Laura Fox
GENERAL MANAGER
(People & Culture)

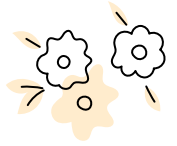


Karen Phillips
GENERAL MANAGER
(StandBy)



Our
Executive
Team

OUR WORKFORCE



Youturn is committed to investing in team members who embody our values and foster a collaborative culture of excellence across all aspects of our organisation.

Since the last Annual Report we have recruited and welcomed new employees across all areas of our business. We've also promoted from within where possible, to ensure our people have opportunities to grow into new roles, including our General Manager Corporate Strategy & Engagement, Tanya Bell, who was appointed as Youturn's Chief Executive Officer in October 2021.

This year, the People & Culture team have focused on our workforce culture, retention, learning and development, and health and wellness.

Our team members are passionate and dedicated to making a real and sustainable difference in the communities in which we operate. We offer flexible working arrangements, a collaborative culture, individualised training, development opportunities, and a range of lifestyle, financial and wellbeing benefits.

SOME HIGHLIGHTS:

- Embedding our safe working culture further, Youturn has progressed to a self-managed phase of Prevention and Management (IPaM) by WorkSafe Queensland.
- Along with Youturn's Wellness Partner/Employee Assistance Program Benestar, in March 2022 Youturn launched a partnership with WHEREFIT® to provide a range of fitness and wellbeing benefits to our workforce.
- As an Employer, Youturn participated in reporting to the Workplace Gender Equality Agency (WGEA) to contribute to a National dataset and improve on issues affecting workplace gender equality in Australia.
- To show our people that we value them, we introduced Birthday Leave, which gifts one additional day of leave for every person in our team.



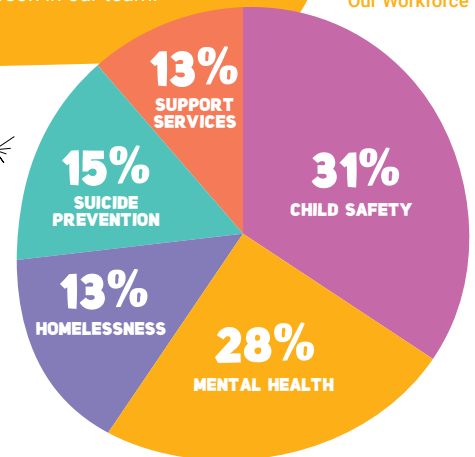
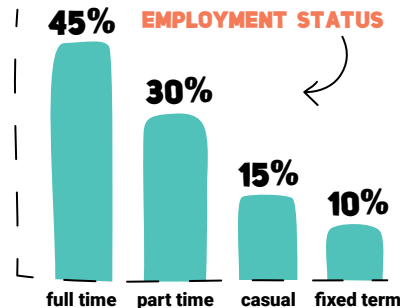
Our Workforce

COVID-19

Last year the COVID-19 Public Health and Medical Directives had a significant impact right across our organisation. After consultation with the workforce, Youturn released its own COVID-19 vaccination policy which came into effect in January 2022.

We worked extensively with our Youturn team to implement the policy and at the end of June all our workforce was compliant with the policy.

168 TOTAL NUMBER OF EMPLOYEES*
*As at June 2022



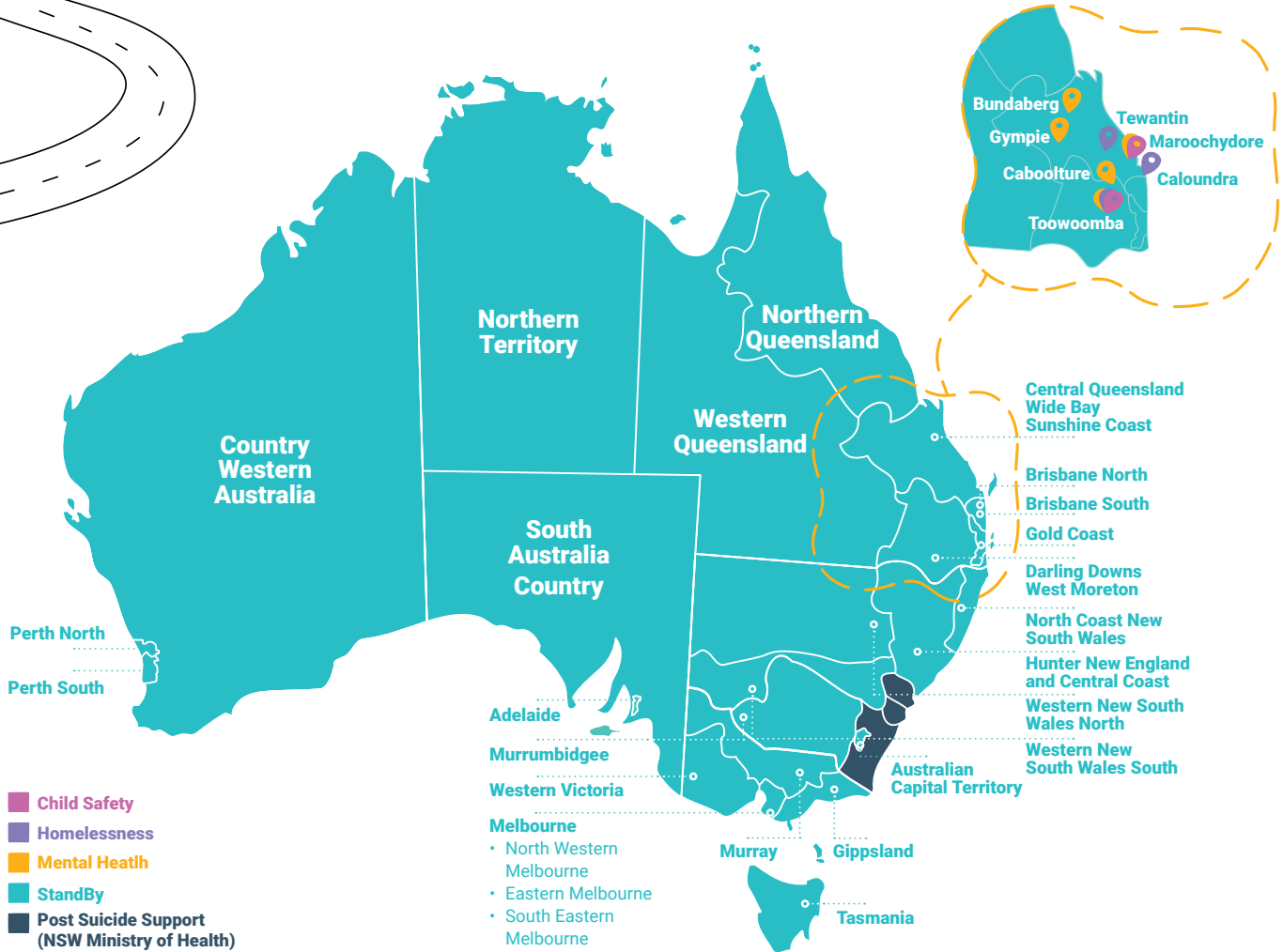
WHERE OUR TEAMS WORK



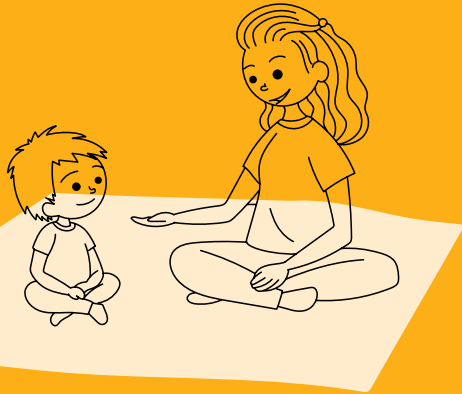
WORK LOCATIONS



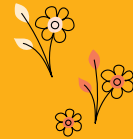
The majority of services Youturn delivers, are across South East Queensland from 15 work locations. The exception is our StandBy Support After Suicide program, which provides support in every state and territory in Australia.



OUR IMPACT

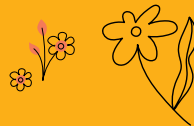


In **1989** **6**
5 volunteers helped **PEOPLE**



In 2022, **168** employees supported

9,963 **PEOPLE**
across all
our programs



Read our stories
and examples of
support online





CHILD SAFETY



Youturn provides children and young people with safe and caring environments by providing a range of different parenting and child safety programs across the Sunshine Coast and Toowoomba regions.

Youturn employs dedicated specialised staff to work with families, young people and children experiencing or who are at risk of harm.

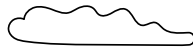
Our team support:

- Vulnerable families to help them to maintain the family unit; and
- Children and young people (0-17 years) who are at risk of harm and cannot remain living safely with their parents.

WE SUPPORTED

452

CHILDREN & FAMILIES



HIGHLIGHTS:

- 65% of children in our Supported Independent Living (SIL) program transitioned out of care, with the necessary skills to live independently, as adults, and are no longer subject to child protection orders.
- 69% of those in our Intensive Family Support programs achieved all or most goals before exiting the program.
- 35% of children in Residential Care transitioned to the SIL program or were reunited with family, whilst the remainder are still in Residential Care.
- Exceptional feedback received from the Department of Children, Youth Justice and Multicultural Affairs at our Annual Licensing Review. The team were described as being dedicated to consistent and positive care provision.

"THEIR SERVICE IS FLEXIBLE AND OPEN TO DISCUSSION. YOUTURN IS EASY TO WORK WITH AND COMMUNICATION IS VERY GOOD. YOUTURN PROVIDES HIGH QUALITY SERVICE TO CHILDREN, SERVICE STAFF ARE CREATIVE AND APPROACHABLE AND DEMONSTRATE GREAT PROBLEM SOLVING AND COMMITMENT TO SEAMLESS SERVICE PROVISION. YOUTURN IS STRONGLY COMMITTED TO COMPLYING WITH REQUIREMENTS UNDER THEIR ORGANISATION LEVEL LICENCE (OLL)."

11,260 CHILDREN

require care in Queensland

4%

INCREASE
as of 31
December 2021



(Dept of Children,
Youth Justice and
Multicultural Affairs)

FUNDERS

As a Licensed Care provider, our Child Safety services and programs are funded by the Queensland Department of Children, Youth Justice and Multicultural Affairs.

HOMELESSNESS

Youturn has been providing youth homelessness services for more than 30 years and is recognised as a key provider of Specialist Homelessness Services (SHS) across southern Queensland. Our services include both the provision of accommodation, with over 50 beds/night available across 20 properties, as well as wrap-around case management services for young people aged 16 to 25 years.

Our dedicated case officers support:

- Young people at risk of or experiencing homelessness; and
- Young families looking to identify long term, affordable and sustainable accommodation.

1,027
YOUNG PEOPLE & FAMILIES
SUPPORTED



HIGHLIGHTS:

- This year our team saw an increase in complexities surrounding referrals due to COVID-19. As a result, most programs have exceeded their KPIs by continuing to support young people and families by working collaboratively with other services to assist and transition them to stable and affordable accommodation.
- In addition, Youturn gained extended funding to deliver community programs within Toowoomba that are targeted at reconnecting the youth within the community.
- 17,179 – The total bed nights provided across our homelessness programs this last year.
- Our financial counselling program, Money Matters has helped 207 people with debt repayments of \$365,500.



Each night in Australia

105,000
people are experiencing
HOMELESSNESS

With more than

1/3
BEING
CHILDREN & YOUNG PEOPLE
under the age of 25

FUNDERS

Our Homelessness Services and Programs are funded by the Department of Communities, Housing and Digital Economy.



MENTAL HEALTH

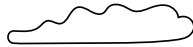


Youturn's mental health support services are for young people going through a tough time and needing friendly youth support. We work closely with young people to help get their lives back on track providing clinical and non-clinical support services such as social groups and activities.

As the lead agency for five headspace centres across South-East Queensland, Youturn focuses on early intervention and connecting young people (12 – 25 yrs) with a range of services and programs to ensure they receive comprehensive and individualised support.

Through the delivery of our mental health services, Youturn is committed to supporting:

- Young people who are experiencing mild to moderate mental health problems; and
- Those who support young people accessing our services.



4,232

YOUNG PEOPLE & FAMILIES SUPPORTED

16,585

APPOINTMENTS DELIVERED

HIGHLIGHTS:

- From a small satellite centre, this year, headspace Gympie received funding to become a full centre, supporting the youth of Gympie for not only improved mental health, but also vocational and employment support, physical and sexual health, and support those with AOD (Alcohol and Other Drugs) challenges.
- All Youturn headspace centres have consistently received positive feedback from young people accessing their services, and a satisfaction rate of 4.15 out of five (above national average) was reported across 492 young people who completed our client satisfaction survey.
- headspace Maroochydore and Toowoomba have been successful in accessing additional funding over three years to increase staffing and reduce wait times. Successful rollout of the Early Careers Program has
- been really positive and is currently supporting graduates across Toowoomba, Caboolture, Maroochydore and Bundaberg headspace centres to gain the skills and knowledge to become fully accredited mental health practitioners.

1 IN 4 PEOPLE IN AUSTRALIA are struggling with their MENTAL HEALTH

OVER **75%** before the age of 25

82%

of Australians aged **16 to 25** rated worse since the **PANDEMIC**

72% PEOPLE

who exhibited suicidality reported **MENTAL ILLNESS** in the preceding **12 MONTHS**

FUNDERS

Our headspace centres are funded on a regional basis through the PHN's and Medical Benefits Schedule Billing.



SUICIDE PREVENTION



StandBy Support After Suicide, a program of Youturn, is Australia's leading provider of support after suicide, providing free face-to-face and telephone support to individuals, groups and the wider community bereaved or impacted by suicide.

Established in 2002 to meet the need for a coordinated community response to suicide, it has grown into an established and respected national program, becoming Australia's leading provider in suicide postvention today.

In addition, community workshops and education programs are locally tailored and provide increased awareness of suicide and suicide bereavement, to help enable communities to support one another.

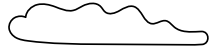
StandBy supports anyone bereaved or impacted by suicide including: Individuals, Families, Friends, Witnesses, First Responders and Service Providers.

HIGHLIGHTS:

This year, Youturn's national program StandBy Support After Suicide marked 20 years of service in supporting those bereaved or impacted by suicide loss. StandBy hosted its annual forum 'StandBy Connect 2022' at the Novotel Twin Waters Resort with its national workforce, partners and guest speakers from Australia's suicide prevention sector in attendance to connect and reflect on the 20-year journey in suicide postvention.

4,252
PEOPLE SUPPORTED
in group or individual sessions

76%
INCREASE OVER
LAST YEAR



Every day in Australia **9** PEOPLE will be lost to suicide

and another **178** will attempt suicide

Each suicide impacts up to **135** MORE PEOPLE (est)

SUICIDE is the leading CAUSE OF DEATH among Australians AGED 10-24

PARTNER ORGANISATIONS

StandBy established a preferred partner structure and operates nationally with respected local organisations, engaging their expertise within the community to deliver the most effective and culturally suitable support for each individual circumstance.



FUNDERS

StandBy – an initiative funded by the Australian Government.
Post Suicide Support – an initiative funded by the NSW Government.



OUR STRATEGIC PATHWAY

We are continually striving to find new ways to assist the communities in which we work...

Despite our 2020-2025 Strategic Plan being developed in pre-COVID-19 times, Youturn has continued to pave progress towards our goals. At the end of our second year, we achieved a great deal across all five areas of strategic focus and investment. This is largely due to our purpose remaining clear – to support vulnerable people in our community.

This year we have continued to adapt in response to both internal and external factors that have had the potential to disrupt our

services. Like previous years, the biggest challenges we faced related to **increasing mental health** issues as well as the continuingly **evolving housing crisis**.

Youturn committed our own resources and established key partnerships with government, private and community sectors to address what can be considered as the biggest social and health issues of recent times.



- In mental health, we have continued to **innovate** and work outside traditional health sector partners turning our focus to areas including education, fitness and the arts to develop and deliver bespoke programs focused on sustainable outcomes.
- Youturn has self-funded the building of duplexes in Toowoomba to provide additional stock aimed at filling the affordable housing gap that is driving the housing crisis.
- We have gained new Corporate Partners and Preferred Suppliers throughout the year who share our values and goals, including Heritage Bank, Optus, Henzells Agency and many more. These strategic partnerships enable Youturn to do far more than what is possible with our government funding.
- Through in-kind support, discounts, givebacks and donations we have been able to achieve some of our key strategic priorities over the last year that would have otherwise taken longer to realise.

5 PILLARS OF OUR STRATEGIC PLAN



THOSE WE SUPPORT

Like many organisations across Australia, Youturn's mental health services are experiencing high demand resulting in longer wait times. In an effort to find alternatives for the people we support, Youturn partnered with the University of NSW and Black Dog Institute to participate in a world first trial of a mixed Virtual Reality (VR) room to support mental health.

This powerful tool, called Edge of the Present, has shown to improve mood, wellbeing, and positive future thinking, as well as alleviate thoughts of hopelessness and stimulate a sense of peace and mindfulness.

Bringing it to community for the first time, the trial has been very successful and has attracted a lot of people wanting to explore complimentary options to support mental health and wellbeing.



OUR SUSTAINABILITY

Like many service delivery charities, a large proportion of Youturn's income is based on grant funding. As part of our philanthropic journey, Youturn is collaborating with corporate partners to help them achieve their Environmental Social Governance (ESG) goals. This is a new approach for Youturn and will support our diversification of funding, ensuring our sustainability.



OUR QUALITY

Youturn has made significant enhancements in the processes of identifying, reporting and escalating hazards or incidents. Due to these enhancements, there is now one consistent process and form for identifying and reporting hazards or incidents, regardless of which area of the business our teams work.

This has enabled Youturn to improve monitoring, impact reporting and safety, which is already resulting in earlier identification and improvements, and ultimately, improved the quality of our services for the people we support.



OUR WORKFORCE

Youturn values the health and wellness of our team members and this year we partnered with WHEREFIT©, a corporate fitness and wellbeing benefits platform, offering access to exclusive discounts of up to 40% off at leading fitness and wellbeing brands across Australia.



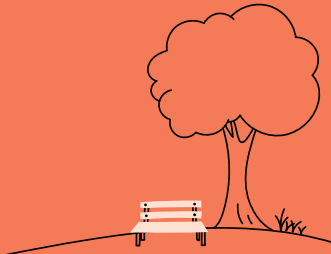
OUR COMMUNITIES

To find innovative ways to support young men's health, Youturn and headspace Maroochydore, together with Kawana Shoppingworld organised an urban art group activity for young men (12 – 25 years) during Mental Health Week in October.

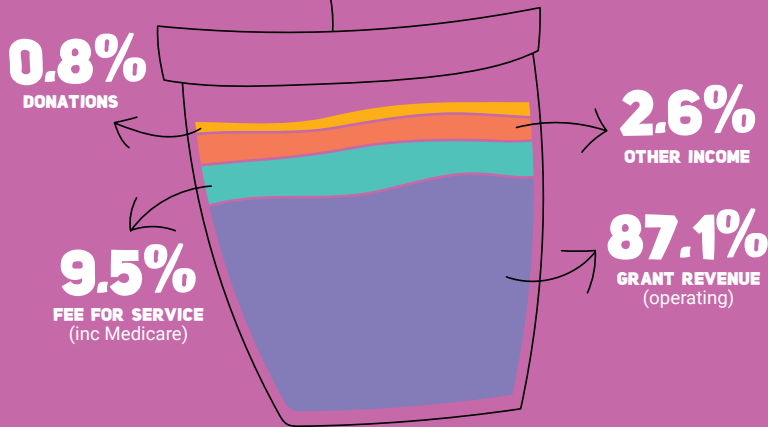
Collaborating with well-known urban artist Sarah Sculley and Aboriginal portrait artist, Jandamarra Cadd, a group of young men designed and created a visual story full of symbolism on connection and community, blending First Nations and contemporary styles.

This Urban Art project aimed to help build resilience, develop social connections, and inspire young men to talk openly and have a voice on issues important to them.

Art can help to explore and interpret stories, share and learn more about how other people see the world. Participation in art activities helps expand our networks, strengthen our social bonds and bring our communities closer together – the foundations for wellbeing.



HOW HAVE WE TRACKED?



SOURCES OF INCOME

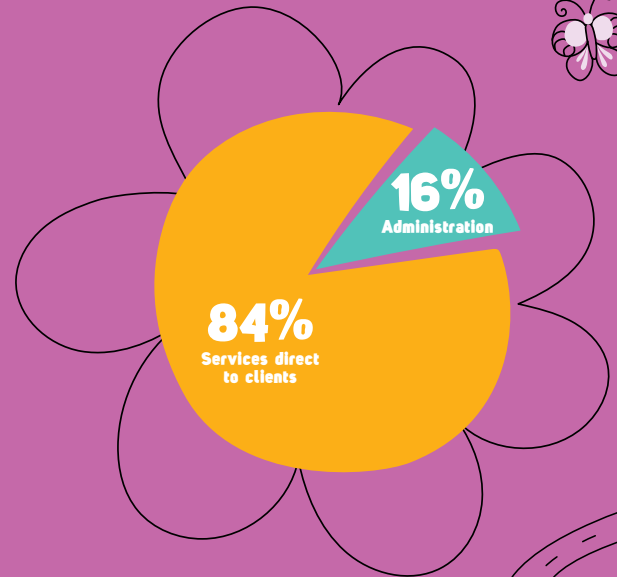
Funding to support the work we do comes from a range of sources. Whilst our predominant source of income is through Government grants, our income from donations is steadily growing as our philanthropic journey continues to develop.



Download our Full Financials

BREAKDOWN OF EXPENSES

Youturn strives to ensure that the majority of the funding we receive goes directly to those we support. The breakdown of the proportion of our expenses which are directly incurred from the delivery of our services and programs, tracks how well we do in achieving this aim.



WHO HELPS US



Watch our supporters sizzle reel from the Youturn It Up! music festival.



OUR AMBASSADORS

Sam and Tim Aitken

The Youturn It Up Festival (which was delayed twice by COVID-19) was finally held in April during Youth Week at NightQuarter.

The concert was hosted by our ambassadors, Sam and Tim of Sametime, who worked tirelessly to bring their vision to life.

With a great line up of local musicians and talented DJ's, it was an awesome night, all for a good cause. Not only are we grateful for the funds that were raised, and the generous support of local businesses who sponsored the bands and purchased tickets for young people to attend, but also for the opportunity to raise awareness for Youturn and the work that we do in this region.





PARTNERSHIPS STORIES

Youturn is proud to partner with socially responsible corporates and supporters to help us achieve our social goals and make a difference in our local communities. Whether it be for a project or longer term partnership, Youturn has valued the support we have received this year. Some of the incredible organisations have included:



BUILDING DESIGN QUEENSLAND (BDQ)

Building Design Queensland have chosen to support Youturn as their first community partner, allowing us to tap into their expertise and skills to help us realise our vision for affordable housing across a number of projects.

Not only have they volunteered their skills and building project advice, they invited our CEO as a speaker at their annual awards dinner, and they have also nominated Youturn as the beneficiary of their fundraising initiatives.

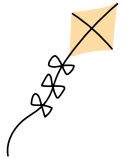
“WE TRULY BELIEVE THAT IT TAKES A WHOLE COMMUNITY RESPONSE TO ADDRESS THE BIG ISSUES AND FOR US THIS MEANS WORKING ALONGSIDE ORGANISATIONS LIKE BDQ AND ITS MEMBERS”, SAID DR BELL.



AUSSIE TINY HOUSES

Youturn has worked closely with Aussie Tiny Houses over the last 18 months to design and build two tiny homes. They shared our vision to find solutions to the current housing crisis. Not only did they carefully listen to understand our requirements and patiently work with us on the builds, they went beyond this to contribute financially to our fundraising efforts.

This mutual respect and successful collaboration has led to Fabio, Alex and the Aussie Tiny Houses team continuing their association with Youturn by becoming a corporate partner. Believing in giving back to the local community, Aussie Tiny Houses will strive to create awareness, help inform and educate and raise funds to support the work that Youturn does.



JETTS

Following last year's Push Up Challenge, Jetts Caloundra were keen to come up with something different to raise awareness and fundraise for Youturn.

Jetts organised an Amazing Race, with Jetts members, Youturn and headspace staff and

the community all coming together for an epic challenge – all for fun, fitness and fundraising for Youturn's mental health programs.

Youturn is in discussions with Jetts, as a partner to extend this initiative across the Sunshine Coast, so watch this space...



WHITE'S IGA

White's IGA on the Sunshine Coast have been wonderful supporters of Youturn. For a second year they have hosted an in-store campaign over two weeks in March to fundraise for our mental health programs, actively encouraging our community to lend their support to this important initiative.



HENZELLS

With a generous contribution from Henzells Caloundra, Youturn was able to run various social prescribing programs for young people who are disengaged from school and struggling, looking for social interaction or wanting to learn a new skill.

This last year Youturn organised:

- Fishin' Mates Program: A mental wellbeing program for young men, presenting them with a chance to get outdoors, cast a line, de-stress and explore with the guidance of a mentor.
- Self Defense for Teens: Offered young people the opportunity to learn effective and practical self-defense techniques to help build confidence and empower young people.

Joined by headspace Maroochydore, the Lions Club of Caloundra West and our Ambassadors Tim and Sam, we held a great event, which created a lot of buzz outside the IGA Baringa store.



"THIS PROGRAM HONESTLY CHANGED THE TRAJECTORY OF MY SON'S LIFE. HE FELT SEEN AND HEARD AND GREW IN CONFIDENCE. HE IS DOING SO MUCH BETTER AND IT ALL STARTED WITH FISHIN' MATES. I AM SO GRATEFUL TO HARRY AND THE YOUTURN TEAM."
(MUM)





MAPPING THE JOURNEY FORWARD

Like many service delivery agencies across Australia, and around the world, the last three years have dramatically impacted and forever changed our organisation. We have faced challenges that we could not have imagined and have flexed our operations to overcome these whilst remaining focused on our purpose.

There is no doubt that our 2020-2025 Strategic Plan has served Youturn well as we navigated a new name and direction for our organisation. However, as we continue to evolve and grow in a post-pandemic world it is important that we are prepared to challenge our goals and priorities to ensure we remain relevant and current.

Whilst our strategy has developed organically since our plan's release in 2020, with a new Federal Government as well as emerging social and political priorities, this next year will see the Youturn Board and Executive formally review and update our Strategic Plan.

WE WILL CONTINUE TO EVALUATE AND CONSIDER OUR VALUE IN INITIATIVES THAT SUPPORT LOCAL, STATE AND FEDERAL GOVERNMENT STRATEGY AND DIRECTION INCLUDING:

The Federal Government's **HOUSING REFORM AGENDA** which aims to encourage and support collaboration across all levels of government to make it easier for Australians to access safe and secure housing.

Stage 2 of the Federal Government's **NATIONAL MENTAL HEALTH AND SUICIDE PREVENTION PLAN** which focuses on prevention, early intervention and support for vulnerable people, along with a commitment to address workforce and governance gaps.

Participating in the Queensland Government's **HOUSING SUMMIT** which will feed into National Cabinet's consideration of the issue of housing and cost of living.

Working with all levels of government to implement the **BILATERAL SCHEDULE** on Mental Health and Suicide Prevention.

THANK YOU

In order to deliver consistent and sustainable outcomes, Youturn relies on the collaboration of government, organisations, agencies, businesses, and supportive communities. We are incredibly thankful for the generous support and working relationships we have to help us make a difference.



YOU↑TURN®

T 07 5442 4277 E reception@youturn.org.au
A 12 Ernest Street (PO Box 365), Tewantin, QLD, 4565, Australia

YOUTURN.ORG.AU

